

INSPIRE INITIATIVE

Inspiring the next 100 years of Christians



LAKE JAMES CHRISTIAN CAMP AND RETREAT CENTER

CASE FOR SUPPORT
DRAFT





LETTER FROM EXECUTIVE DIRECTOR

Thank you for your partnership in the ministry of Lake James Christian Camp and Retreat Center! The past four years our Board of Directors and staff have been on a faithful journey to strategically advance the camp as we approach our 100 year anniversary in 2029. After months of prayer and planning we have decided to move forward in faith to significantly improve and update our current facilities. This document outlines our bold, three-phase plan to replace dorms, secure the main campus, build a new chapel, and renovate areas of Memorial Hall and the Family Life Center.

For nearly a century, the ministry of Lake James Christian Camp has had local impact on our community and region as well as global impact throughout the world. LJCC has played a significant role in the faith journeys of countless campers from past generations, and continues to influence the faith of more and more people every year (including myself and my own family). By updating our facilities, our goal is to continue to provide a safe and positive experience like I and my children have had. Our Board and staff want to be sure that we are leaving the camp in a great position for many more generations.

In the 1960s LJCC saw significant growth that facilitated the need for more summer camper housing and a larger Chapel. These facilities have served us well for decades. However, they were built with just summer camp in mind and we have over the years worked to retrofit them for year-round usage. To continue to try and maintain and retrofit these spaces for summer campers and retreat guests we believe would be poor stewardship moving forward.

Our younger generations are bombarded daily by so many distractions in their world. More than ever, they need sacred spaces like the camp to get away to a beautiful, safe place to unplug from technology and focus on God. Many campers and guests who spend a week or a weekend here are inspired to take the next step in their faith journey.

Inspire is at the heart of our Mission, Vision, and Values. At first glance the word inspire means to influence, encourage, or invigorate. At a deeper level you will find its original meaning is to influence, move, or guide by divine influence or action. It can also be defined as God-Breathed. My prayer is that as you look through pictures, review numbers, and read the stories in this report that you will be inspired. I pray that you are encouraged and experience the very breath of God through these pages.

With your help we will launch the Inspire Initiative to reach the next generation of campers for Jesus. New and improved facilities will inspire growth, inspire community, and inspire future generations. May your child-like faith be renewed as you join us in this exciting adventure!

A handwritten signature in white ink that reads "Matthew".

Matthew Love
Executive Director

The Inspire Initiative

The Inspire Initiative is a capital campaign designed to renovate our aging facilities at LJCC. We are a debt free organization! The camp's staff and Board of Directors have been stewards of God's resources for almost 100 years to bring upcoming generations to Christ. We believe that this initiative is inspired by Him to allow us to better serve future generations.

Our mission is to create experiences that inspire and prepare the next generation to be followers of Jesus. Our vision is to be a premiere destination for spiritual transformation and equipping the next generation of Christians. With this in mind, we have identified areas of our camp that need renewing.

- Dorms
- Maintenance Building
- Chapel
- Outdoor Programming Areas
- Memorial Hall
- Family Life Center
- Parking and Main Entrance

"I can do all this through him who gives me strength." Philippians 4:13

We are embarking on a journey that will show our campers and guests what can be accomplished through Christ who strengthens us!

The Next 100 Years

LJCC currently hosts an average of 4,000 guests throughout the year. That number includes Summer Campers, School of Missions guests and guest retreat groups. For comparison, guest retreat groups make up 20% of LJCC's annual budget while our camp sponsored events (summer camps, Men's Camp, Winter Camp, Ladies Retreat etc.) makes up 25%. Hosting guest retreat groups of college students and adults are a vital part of our sustainability model. This model allows us to keep the cost of summer camp and other camp events low. Hosting retreats groups along side our summer camps enables LJCC to reach more lives for Christ. Over 4,000 lives per year are experiencing the love of Christ through the usage of our camp and facilities.

Our mission currently serves a wide range of individuals through our summer camps and retreat groups. These groups are the next 100 years of LJCC!

- College age students
- High Schoolers
- Middle Schoolers
- Elementary aged students
- Grandmas, Grandpas, Parents



Our Solution

The **Inspire Initiative** will help us raise funds to address the following challenges so that we can serve our camp and retreat guests for the next 100 years.

- A public road running through the middle of campus
- Outdated dorms
- Facilities that cannot be used year-round
- Facilities that need repair and do not support future growth



Campers and guests are looking for an enhanced LJCC. Updating our facilities and grounds will provide our campers and guests with:

- Quality Programming
- Comfort and Cleanliness
- Safe Environment
- Aesthetics
- A Secure Campus
- Enhanced Security Systems
- Fire Suppression Technology

A fresh, modern space is simply more appealing to prospective campers, their parents and retreat guests. Through enhanced safety features, updated facilities and grounds, and more physical space, LJCC has more room for potential growth. Updating our dorms, Chapel, Memorial Hall and Family Life Center is necessary for our sustainability and future.



MASTER SITE PLAN

Let's say hello to the next 100 years of LJCC's impact!



OUR MISSION is to create experiences that inspire and prepare the next generation to be followers of Jesus.

OUR VISION is to be a premier destination for spiritual transformation and equipping the next generation of Christians

LJCC

Serves the next generation

LJCC

Educates and Equips

LJCC

Builds Authentic Community

LJCC

Inspires Abundant Joy

Launching a Vision

The vision of LJCC is to be a premier destination for spiritual transformation. The following vision is a 10 year project broken down into three phases.

- Phase 1 – New lodges and maintenance building
- Phase 2 – Chapel and a portion of Memorial Hall
- Phase 3 – Finish Memorial Hall and update the Family Life Center

Through this initiative we will inspire growth, enhance the LJCC community and prepare for the future.

PHASE 1 – INSPIRE GROWTH

Focus: **dorms, maintenance building** and **vacate the road** that divides the camp's property.

Our current dorms are not premier. They are outdated, have limited usage to four months a year and do not have enough space for potential growth. Phase 1 of the Inspire Initiative will be raising funds to replace these outdated dorms with new sleeping lodges that will be functional *year round*. Not only will this greatly improve our facilities it will expand our year-round bed count from 189 to 308. The new lodges will inspire growth through quality lodging that will give LJCC more space to serve all of our guests; from our elementary aged students, to our college students, to the grandmas and grandpas.

A total of four new youth lodges will replace the four boys' block dorms and the two girls dorms. Two 1-story lodges and two 2-story lodges will be built. The new lodges will include:

- One Story Lodges – capacity of 32 people
- Two Story Lodges – capacity of 64 people
- Full ADA accessible restrooms on each floor
- A living room on each floor to provide community space and serve as a small breakout room
- A porch will provide covered outdoor space

New lodges will necessitate relocating the Maintenance building. Plans are in motion to purchase a new maintenance building adjacent to the camp's property.

We aspire to have the road that cuts through the heart of camp closed. The entrance to the vacated road will become the main entry point into the camp. This improvement will eliminate outside traffic through the property. It will allow us to have one secure entrance into the property.

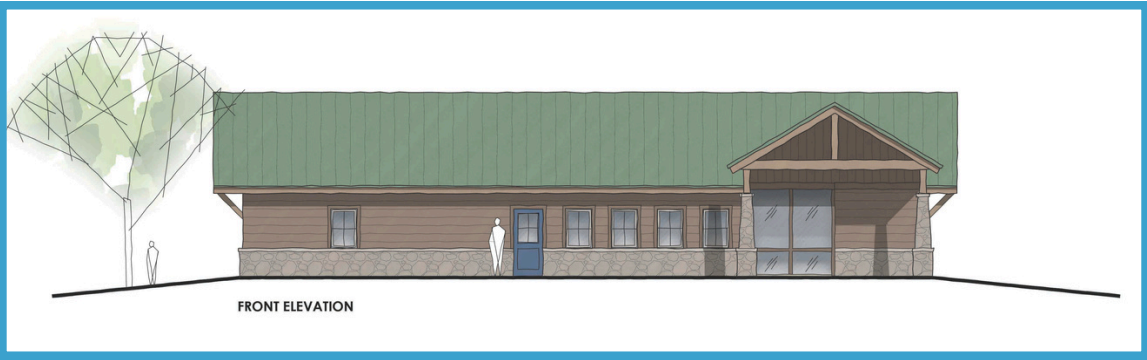
The opinion of probable cost for Phase 1 (Inspire Growth) is \$7.5 million.

PHASE 1 - INSPIRE GROWTH

New Youth Lodges



Two Story Lodge



One Story Lodge



Proposed Floorplan - One Story Lodge

Phase 2 - Inspire Community

Focus: Chapel, Memorial Hall, Program Areas

When the chapel was constructed in 1968, it was not designed for year-round use.

- Originally was insulated for summer use, this makes heating in the winter challenging
- The restrooms are accessed from the outside and cannot be used during winter
- The roof needs to be replaced



These repairs are necessary but are costly. With stewardship in mind, a new Chapel is most cost effective. Our current Chapel has served this camp well. Our community needs a Chapel that is better suited to accommodate 100 more years of camper and guest memories.

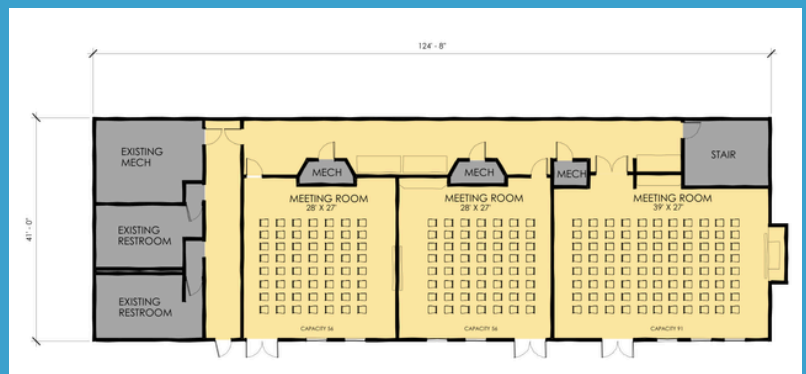
Memorial Hall is the anchor of LJCC's property. Our Master Site Plan proposes the renovation of two levels: the Upper Level and Lake Level, with plans to refresh the Dining Hall level. Phase 2 calls for transforming Lake Level from two sleeping rooms to three meeting spaces with capacity for 91, 56 and 56 people.

We will improve certain areas of our programming in Phase 2. These improvements will focus on the outdoor spaces that our campers and guests use most. These common space improvements will include: ball field, basketball court, playground, gaga pit, a canopy walk through the rose bowl and high ropes course.

The opinion of probable cost for Phase 2 (Inspire Community) is \$5 million.

New Chapel Plans

- Seating for 350 people
- ADA accessible bathroom located **inside** the building
- State of the art sound and lighting system
- Hospitality suite
- Porch



Lake Level - Memorial Hall Renovation

- 3 meeting rooms
- Room 1 - 56 person capacity
- Room 2 - 56 person capacity
- Room 3 - 91 person capacity

Phase 3 - Inspire the Future

Focus: Memorial Hall and Family Life Center

Memorial Hall renovations will be completed in this phase. The rooms in the Upper Level of Memorial Hall will be converted to hotel-styled suites. These suites will better serve our adult volunteers and guests.

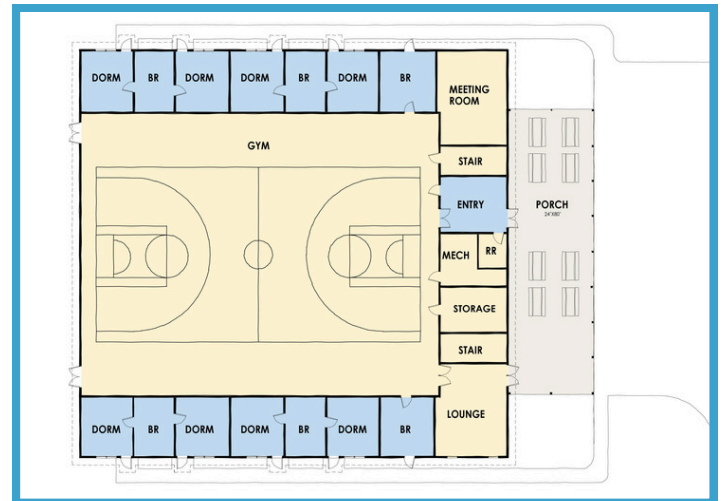
The Family Life Center will be renovated to provide better functionality for the multiple group usage. The sleeping rooms on both sides of the building will be reoriented to be accessed from the outside of the building. Doors will be added to the outside, the doors that have direct access to the gym will be removed. Another primary initiative is to add a larger porch to the front of the building to provide a space for community engagement. The porch will also work to define a main entry to the building. The Family Life Center will become the hub of this part of camp.

The opinion of probable cost for Phase 3 (Inspire the Future) is \$2.5 million.

**Upper Level Memorial Hall
Proposed Floorplan**



**Family Life Center
Proposed Floorplan**



LJCC’s Next Steps

After putting in the footwork to create a Strategic Plan in 2022-2023 which led to building a cohesive Master Site Plan in 2024-2025, our camp leadership began praying about next steps. In May of 2025 we were notified that three grants had opened up specifically for residential youth summer camps. In June of 2025 we were awarded grant one. This grant is what inspired LJCC to move forward with the Inspire Initiative. Each grant will help us with a portion of our Master Site Plan.

- **Grant One** – \$150,000. This grant has allowed us to move forward with our Master Site Plan to begin the Inspire Initiative. *This grant has been awarded!*
- **Grant Two** – 1 million dollars. Grant two will allow us to purchase a neighboring shop for maintenance operations and begin construction on the first two story sleeping lodge. *This grant has been awarded!*
- **Grant Three** is a matching grant: up to a 5 million dollar award. To receive 5 million dollars we need to raise 5 million dollars.

We are looking at a 15 million dollar project that spans over a 10 year period. We are starting the Inspire Initiative to raise funds for Phase 1 of the Master Site Plan.

Please see the below attachment that breaks down our budget.

Master Site Plan Budget Breakdown

PHASE	PROJECTS	TIME FRAME	COST
Phase 1 INSPIRE GROWTH	<ul style="list-style-type: none">• FOUR LODGES• MAINTENANCE BUILDING• ROAD CLOSURE• DRIVE-WAY ENHANCEMENTS	2027-2029	\$7.5 million
Phase 2 INSPIRE COMMUNITY	<ul style="list-style-type: none">• CHAPEL• PROGRAM AREAS• MEMORIAL HALL RENOVATIONS	2028-2030	\$5 million
Phase 3 INSPIRE THE FUTURE	<ul style="list-style-type: none">• MEMORIAL HALL RENOVATIONS• FAMILY LIFE CENTER RENOVATIONS• NEW STAFF HOUSING	2030-2034	\$2.5 million
GRAND TOTAL			\$15 million

*“I can do all this
through Him who
gives me strength!”
Philippians 4:13*



Let’s take a leap of faith!

An Outcome of LJCC Excellence

Since 2015 LJCC has witnessed an average of 36 baptisms per summer in just 7 weeks of summer programming. In the 2025 summer we saw 55 baptisms. We are seeing an uptick in youth responding to Jesus. Our response is this vision.

Enhanced facilities open the doors to more opportunities to share God's word. Upgrading the outdated structures with safety and excellence in mind will give those coming to the camp as staff and volunteers the knowledge that this ministry is serious. We take feedback from staff, volunteers, parents and campers into account. Lake James wants to be excellent in facilities and programming so that more people can be reached for Christ.

This initiative will:

- Help support our sustainability model
- Advance us into the next 100 years
- Allow LJCC to continue to serve our current generation while keeping the future in mind
- Produce growth



"This was my first year at camp ... It has made me a better person and a strong and anchored child of God."

**Olivia (Jr. High),
Summer 2025**

WHY NOW?

The next generation is currently under served and has incredible potential. We are committed to unlocking the gifts in each person to inspire them to serve the Kingdom. Scripture is abundantly relevant, but scarcely present in society. We work to ground, train, and equip people through sound biblical teaching. People are disconnected from God and each other. LJCC builds authentic Christian community that is engaging, supportive, and fosters continued growth. Camps and retreats are fun! Lake James promotes the value of play, and the joyful nature of our programs as a key part of our identity. In a time when our generations are facing new challenges, LJCC is committed to being a safe destination of knowledge, growth and encouragement. We need more space and we need enhanced facilities. Through launching this vision, we will be better equipped to reach more souls for Christ.

THE INVITATION

Your counsel will help guide this campaign, and your prayer over it is invaluable. The gift chart shows the types and sizes of gifts needed to meet the vision above. Your consideration of these ranges and reflection on how you might support this effort would be deeply appreciated, and will become part of the foundation on which the final plans of this campaign will be drawn.

For we can, “do all things through Him who gives us strength!” (Philippians 4:13)

LJCC’s Gift Profile Guide - Phase 1	
Three Year Commitments, \$7,500,000	
Number of Commitments	Amount of Each Commitment
1	1,000,000
1	750,000
1	500,000
5	250,000
8	100,000
10	75,000
20	50,000
25	25,000
30	10,000
100	3,600
Many	<3,600



“This week of camp [High School] has brought me closer to God in more ways than I can explain. I truly feel that I’m reconnected with God. I want to thank this camp [LJCC] for changing me in so many ways.”

Bryce, (High School)
Summer 2025

The Time to Act is Now

We have heard our community’s concerns, it is time to take action. As an investor of Lake James Christian Camp, you are passionate, you are Kingdom minded. Your life has been transformed through your involvement at camp. You are reading this document because LJCC sees your love for this camp. As you know, an investment in the Kingdom cannot be calculated. It will have unlimited return as God uses your investment to inspire multiple generations of Christians.

We need your help. Invest beyond yourself. Invest in the next 100 plus years. Help us to strive towards excellence. Help us show our young people what can happen when a faithful community comes together in Christ. Help us transform the lives of young believers. We are not just building buildings, we are launching a vision. Be a part of our vision. Let’s demonstrate what our faith and strength in Christ can accomplish.